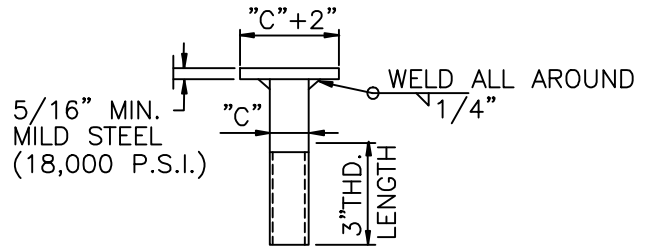
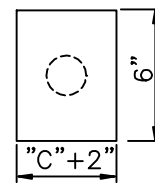


FLAT SUPPORT FOR FIRE SERVICES & METERS

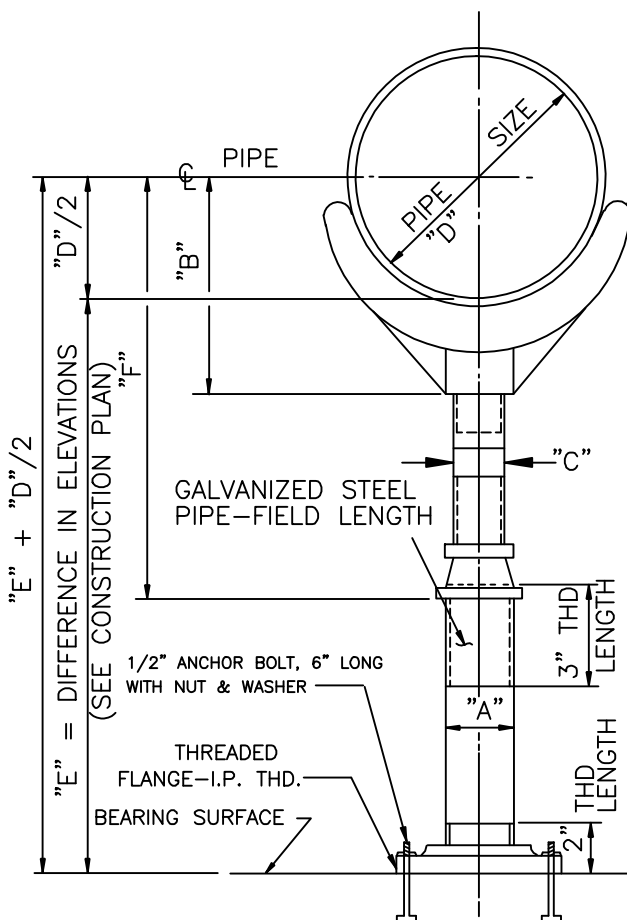


SIDE VIEW



TOP VIEW

ADJUSTABLE PIPE SADDLE SUPPORT  
GRINNELL FIG. 264



D	A	B	C	F	
				MIN.	MAX.
2 1/2"	2 1/2"	3 1/2"	1 1/2"	8"	13"
3	2 1/2	3 3/4	1 1/2	8 1/4	13 1/4
4	3	4 1/4	2 1/2	9 1/4	14
6	3	5 1/2	2 1/2	10 1/2	15 1/4
8	3	6 7/8	2 1/2	11 3/4	16 1/2
10	3	8 1/2	2 1/2	13 1/2	18 1/4
12	3	9 15/16	2 1/2	15	19 3/4
14	4	10 15/16	3	16 1/4	20 3/4
16	4	12 3/8	3	17 3/4	22 1/4
18	6	13 7/8	3 1/2	19 1/2	24
20	6	15 3/8	3 1/2	21	25 1/2
24	6	17 15/16	4	23 3/4	28 1/4
30	6	21 5/16	4	27	31 1/2
36	6	24 1/2	4	30 1/4	34 3/4

DIMENSION TO BE DETERMINED IN FIELD BY CITY ENGINEER

CLASS 520-C-2500 CONCRETE

NOTE:

1. THE FLAT SUPPORT SHOWN IN THIS DETAIL SHALL BE USED FOR ALL METER ASSEMBLIES AND FIRE SERVICES IN LIEU OF THE SADDLE SUPPORT.
2. SUPPORT SHALL BE PAINTED AS APPROVED BY THE CITY AND APPLIED IN ACCORDANCE WITH PART 3 SECTION 2-13.

AUGUST 2005

CITY OF CHIND HILLS			
Revised:	/	/	by:
Revised:	/	/	by:
Revised:	/	/	by:
			Approved by:
			CITY ENGINEER

**PIPE OR FLANGE  
SUPPORT DETAIL**

**W-18**