



**Public Health**  
Preparedness and Response



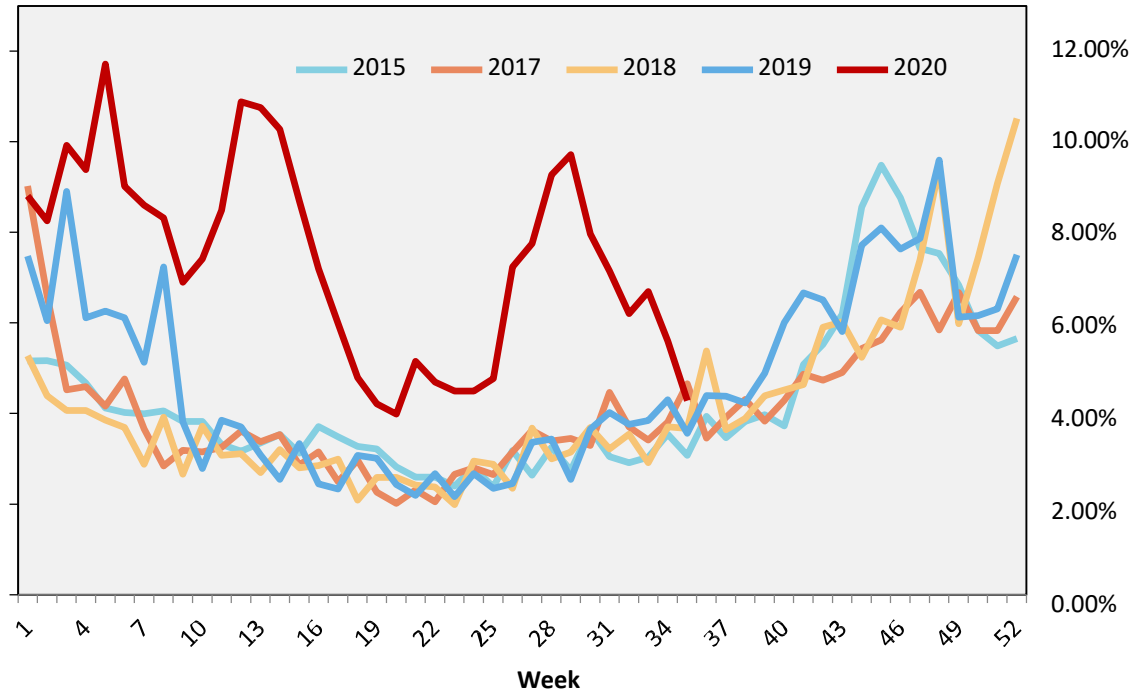
## Advanced Planning: Flu Season During a Pandemic

Trish Muth-Masayon  
Medical Emergency Planning Specialist  
September 14, 2020



- 2018 Influenza Like Illness (ILI) numbers were elevated
  - Pediatric death
  - 10 Mass Vaccination Clinics (MVCs)
    - Medical Point of Dispensing (MPOD) sites
- 2019: First reports of Coronavirus in China during the height of flu season
  - Inflated ILI numbers due to the pandemic?

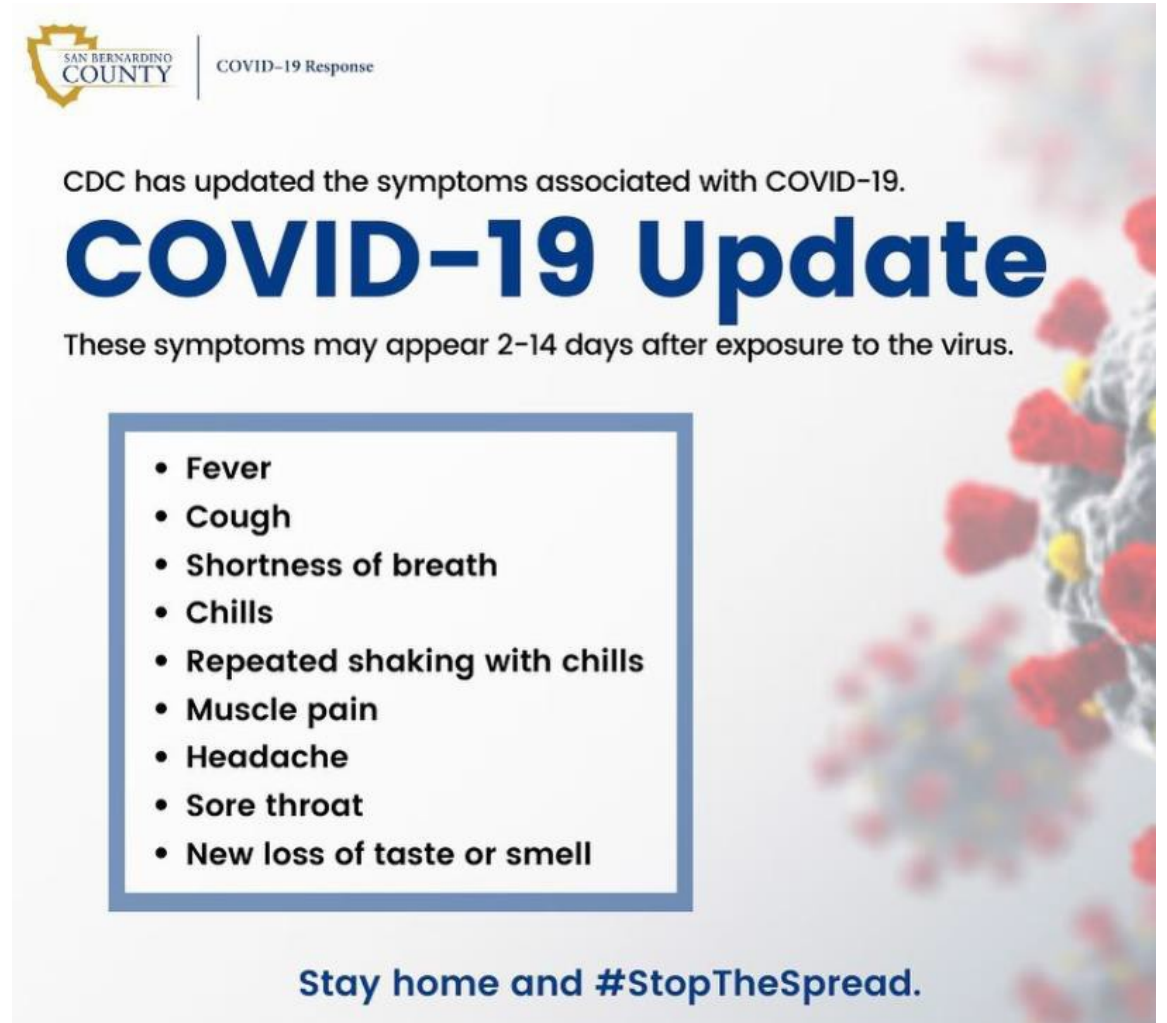
**Figure 1. Average Weekly Percentage of ILI visits in San Bernardino County Emergency Departments,**



**Table 1. Percentage of ILI Emergency Department Visits, San Bernardino County**

MMWR Week	2019-20	2018-19	2017-18
35	4.3%	3.6%	3.7%
34	5.6%	4.3%	3.7%
33	6.7%	3.9%	2.9%
32	6.2%	3.8%	3.6%
31	7.2%	4.0%	3.2%
30	8.0%	3.7%	3.7%
29	9.7%	2.6%	3.2%
28	9.3%	3.4%	3.0%
27	7.8%	2.5%	2.4%
26	7.2%	2.5%	2.4%
25	4.8%	2.4%	2.9%
24	4.5%	2.7%	3.0%
23	4.5%	2.2%	2.0%
22	4.7%	2.7%	2.4%
21	5.2%	2.2%	2.4%
20	4.0%	2.4%	2.6%
19	4.2%	3.0%	2.6%
18	4.8%	3.1%	2.1%
17	5.9%	2.3%	3.0%
16	7.2%	2.5%	2.9%
15	8.7%	3.3%	2.8%
14	10.3%	2.6%	3.2%
13	10.8%	3.1%	2.7%
12	10.9%	3.7%	3.1%
11	8.5%	3.9%	3.1%
10	7.4%	2.8%	3.7%
9	6.9%	3.8%	2.7%
8	8.3%	7.2%	3.9%
7	8.6%	5.1%	2.9%
6	9.0%	6.1%	3.7%
5	11.7%	6.3%	3.9%
4	9.4%	6.1%	4.1%
3	9.9%	8.9%	4.1%
2	8.3%	6.1%	4.4%

- Positive for the Flu?
- Positive for COVID-19?
- Positive for both?
- What does this mean for high-risk individuals?

A graphic from San Bernardino County titled "COVID-19 Update". It features the county logo and "COVID-19 Response" text. The main text states "CDC has updated the symptoms associated with COVID-19." followed by "COVID-19 Update" in large blue letters. Below this, it says "These symptoms may appear 2-14 days after exposure to the virus." A blue-bordered box contains a list of symptoms: Fever, Cough, Shortness of breath, Chills, Repeated shaking with chills, Muscle pain, Headache, Sore throat, and New loss of taste or smell. At the bottom, it says "Stay home and #StopTheSpread." The background has a faint image of a virus particle.

SAN BERNARDINO COUNTY | COVID-19 Response

CDC has updated the symptoms associated with COVID-19.

## COVID-19 Update

These symptoms may appear 2-14 days after exposure to the virus.

- Fever
- Cough
- Shortness of breath
- Chills
- Repeated shaking with chills
- Muscle pain
- Headache
- Sore throat
- New loss of taste or smell

Stay home and #StopTheSpread.

## Influenza Vaccine

- Get your flu shot!
- SBC DPH will be distributing FREE flu shots starting October 2020.
- RiteAid, CVS, Walgreens have flu shots available now.
- High-risk individuals should get the vaccine as soon as possible.

## COVID-19 Vaccine

- News reports forecasting the COVID-19 vaccine may be ready as soon as November.
  - Multiple vaccines in the third phase of trials
    - Two doses
    - 3 or 4 weeks apart
    - 30 minute observation period (planning item)

REMEMBER: You should not have any symptoms when you get a vaccine!

- MPODs (Medical Point of Dispensing Site)
  - Dispense Vaccines
  - Dispense prophylaxis and medical countermeasures
    - Opportunity to test our emergency preparedness plans
    - Slight adjustments to the original MPOD plans
  - SBC DPH's first Drive Through MPOD this year
- SPOCs (Specimen Point of Collection)
  - Fulgent Genetics
  - Free COVID-19 Testing
  - 10 Stationary sites operating daily
- Simultaneous MPODs/ SPOCs this year

## SBC DPH PRP Website

<https://wp.sbcounty.gov/dph/programs/prp>



## SBC COVID-19 Website

<https://sbccovid19.com>



Thank you for your time!